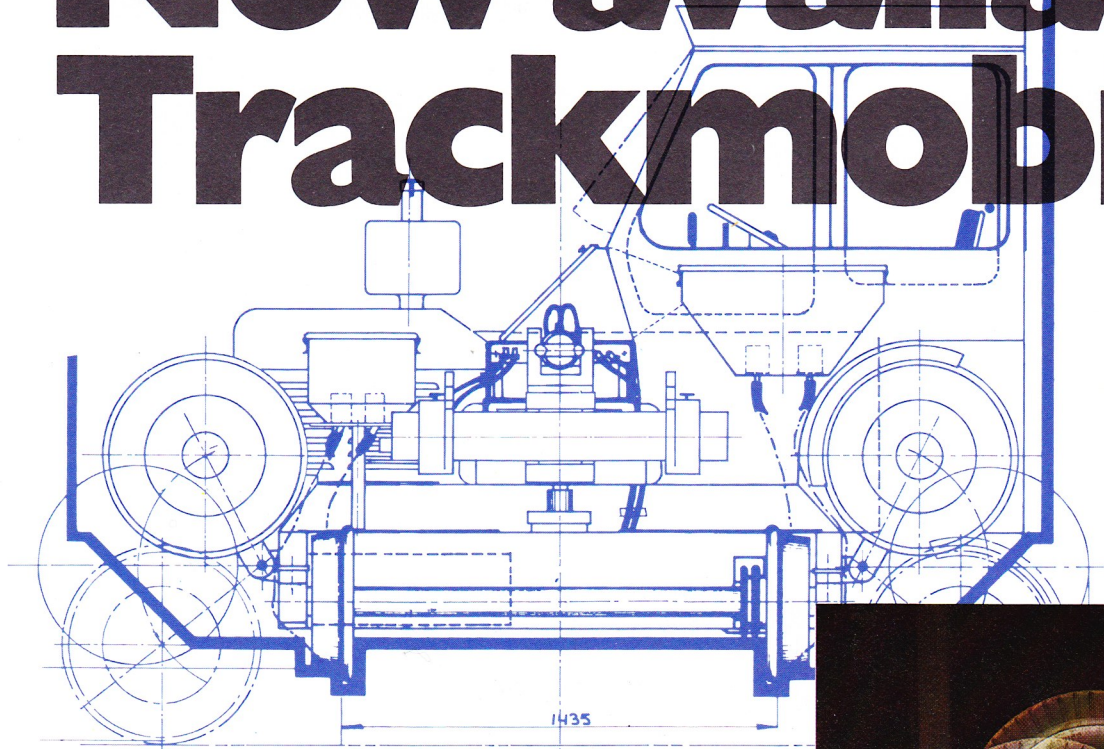


**Now available-the heavy  
duty Trackmobile® 45 TMC.**



**45 TMC**

# Now available - Trackmobile 45



The industrial locomotive that never lets you down: Trackmobile. A highly sophisticated system allows Trackmobile to move on rails as well as on the road. It's the last word in ease-of-use and efficiency. In addition, due attention has been given to the driver's safety. All coupling operations are carried out from the driver's cabin. The Trackmobile series has recently been expanded with a heavier duty model - the 45 TMC. We will be glad to tell you all you need and want to know about the features and benefits of the new model.

## **TRACKMOBILE DRIVES ON RAIL AS WELL AS ON ROAD**

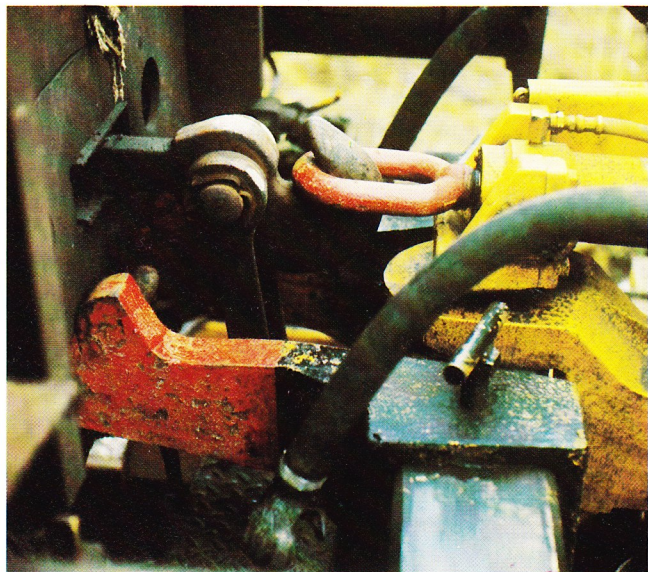
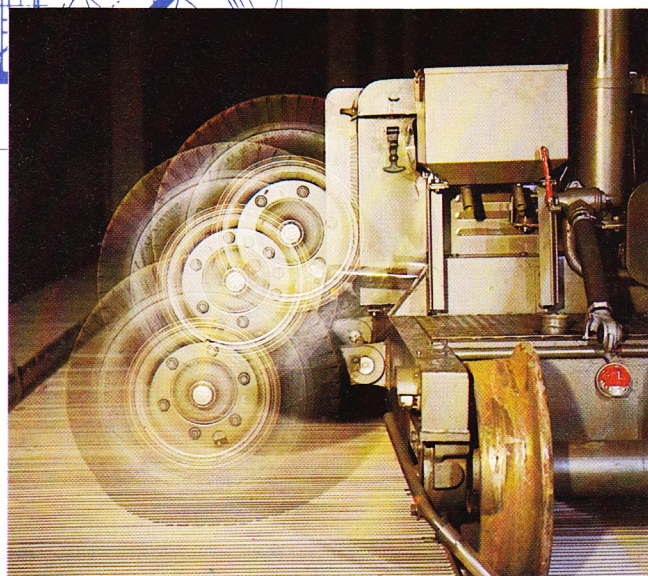
Trackmobile operates much faster, much more efficient than a conventional locomotive. It is independent from both rail and road traffic and the yard lay-out does not have to be taken into consideration. A railway yard can be considerably simplified if at its initial design- and construction stage the capabilities of Trackmobile are taken into account.

## **TRACKMOBILE "BORROWS" RAILCAR WEIGHT TO INCREASE ITS DRAWBAR CAPACITY**

The patented weight transfer enables Trackmobile to increase its operating weight. The operating and owning costs are through this feature considerably less than for a comparable locomotive.

## **TRACKMOBILE COUPLES AUTOMATICALLY FROM THE DRIVERSSEAT**

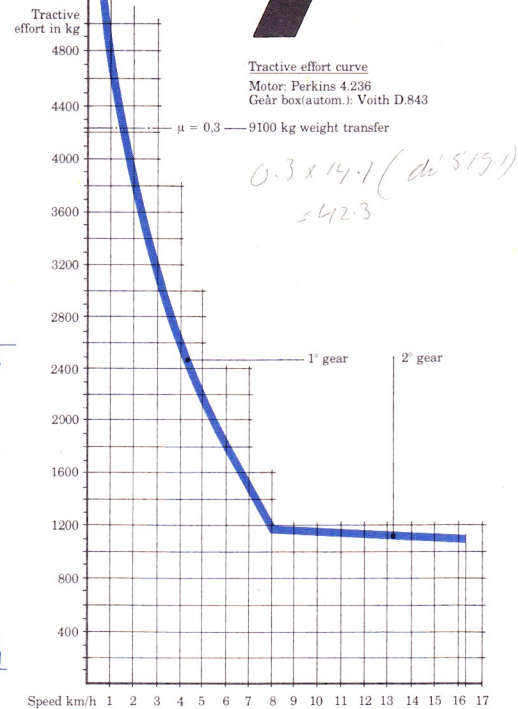
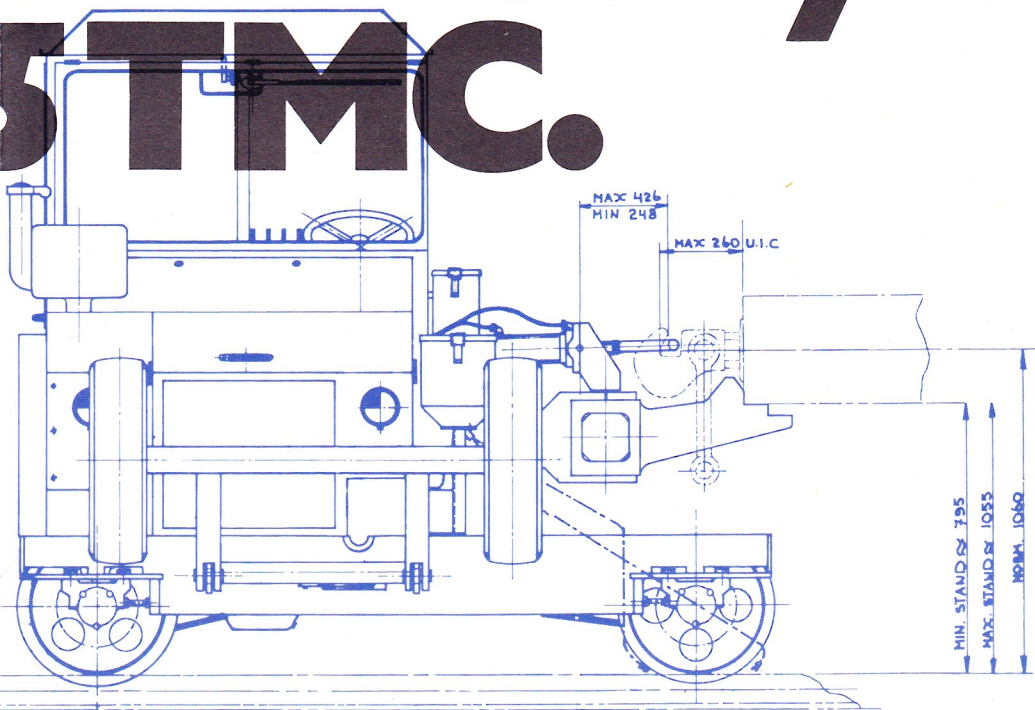
The automatic coupling device eliminates the need of



a person to stand between the wagon and the shunting vehicle. This feature increases the safety during shunting operations and reduces the personnel needed in the shunting yard.

# the heavy duty

# 5 TMC.



## SPECIFICATIONS

### Frame

Heavy duty, all welded steel plate and structural shapes.

### Engine

Flexible mounted industrial diesel engine type Perkins 4.236

Rated output at 2600 rpm (din 6270B) 75 h.p. max.

torque at 1300 rpm (din 6270B) 25 mkg.

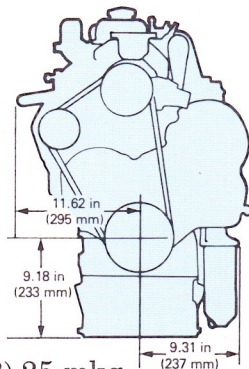
bore 98.4 mm., stroke 127 mm., total displacement 3,86 litre, 4 cycle.

No of cylinders: 4 vertical inline. Combustion system: direct injection. Compression ratio 16 : 1.

Number of revolutions: 1000-2600 rpm

Cooling: water

Governing: mechanical



### Transmission

Voith 843K automatic full power shift with single stage, single phase torque converter counter rotating 7,9 to 1 ratio, at higher speeds the power is transmitted purely mechanical 1,5 to 1 ratio. The transition from the hydraulic-mechanical to the mechanical drive takes place fully automatically, dependent upon vehicle speed and engine throttle, without any interruption of tractive effort.

### Road wheel drive

Through duplex chain to roadwheel axle. Automatic disengaged in retracted position of the wheels.

### Road wheels

Industrial tyres 7.00 x 12 -12ply.rating.

### Rail wheel drive

From intermediate gear case through chains to the rail wheel axles.

### Railwheel

458 mm. diameter cast steel wheels with U.I.C. contour.

### Brakes

Hydraulic actuated disc brakes and mechanical hand parking brake

### Hydraulic system

Open center system. PTO mounted vane type pump.

### Coupler

Heavy duty cast steel patented weight transfer design with adjustable forks.

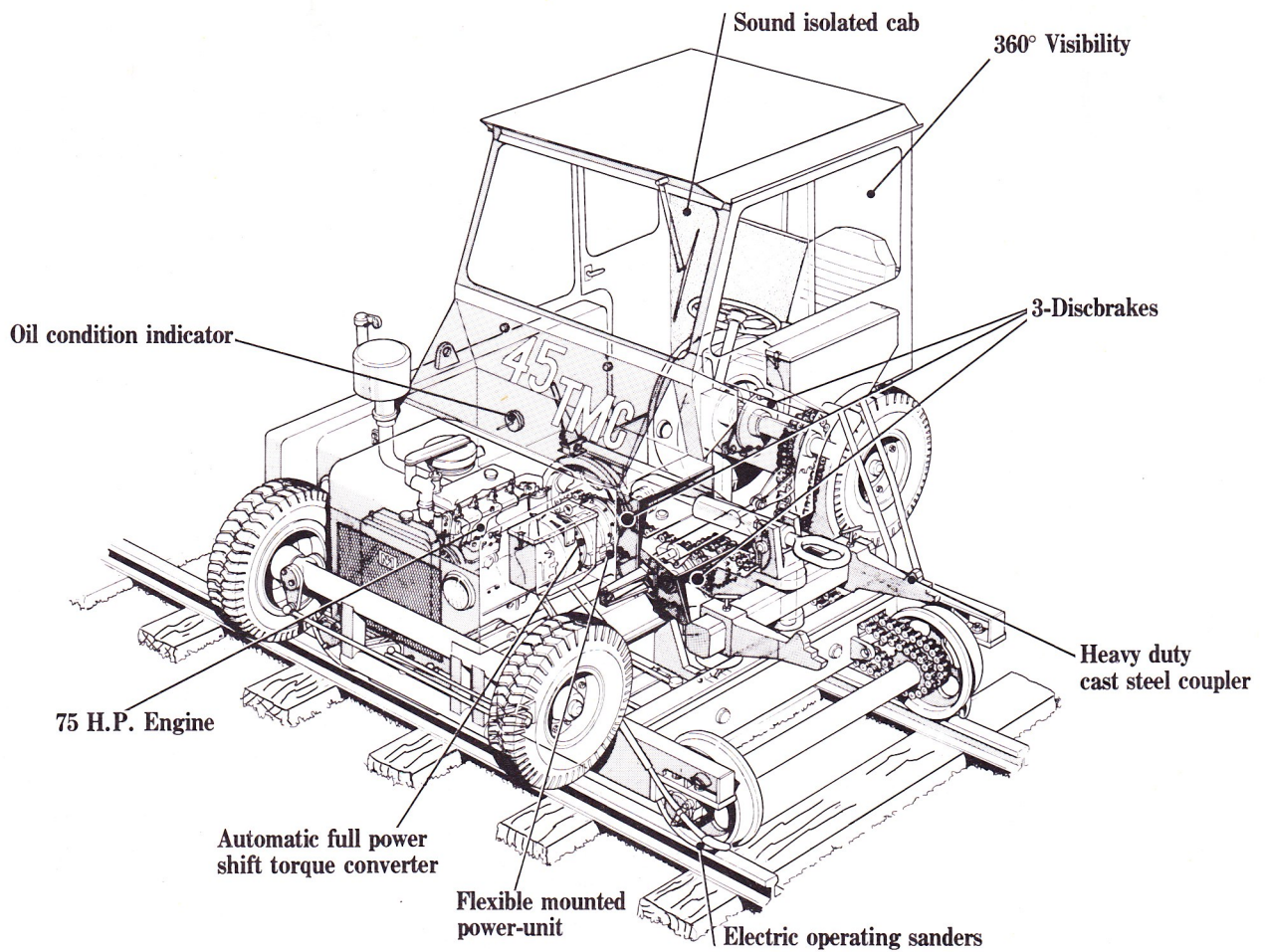
### Sanders

Electrically operated for sanding front and rear of coupler side railwheels.

### Lights

Two headlights, two side lights and two combined tail stoplights and turn signals for road operation. Three, triangle mounted combined lights – red/white on each side for rail operation according U.I.C. requirements.

# 45 TMC



**Cab**  
Driver conditioned sound isolated cab.

**Speed**  
on rail – 16 km./h. on road – 16 km./h.

**DIMENSIONS**

	On rail	On road
Gauge	1435 mm	1245/743 mm
Wheelbase	1968 mm	2638 mm
Length (overall)	2540 mm	3298 mm
Width (overall)	3010 mm	2500 mm
Height (overall)	2200 mm	2445 mm
Road clearance		240 mm
Weight	5000 kg.	
Operating weight	14100 kg.	

**OPTIONALS**

- Wagon air brake
- Polyurethane wheels
- Power steering
- Heater
- Rotating light
- Exhaust purifier
- Spot light
- Side window-wiper



**TRACKMOBILE®**  
Division of M.P.B. Europa B.V.  
Osloweg 59  
P.O. Box 5016  
9700 GA Groningen  
The Netherlands  
Telephone 050-185066  
Telex 77205